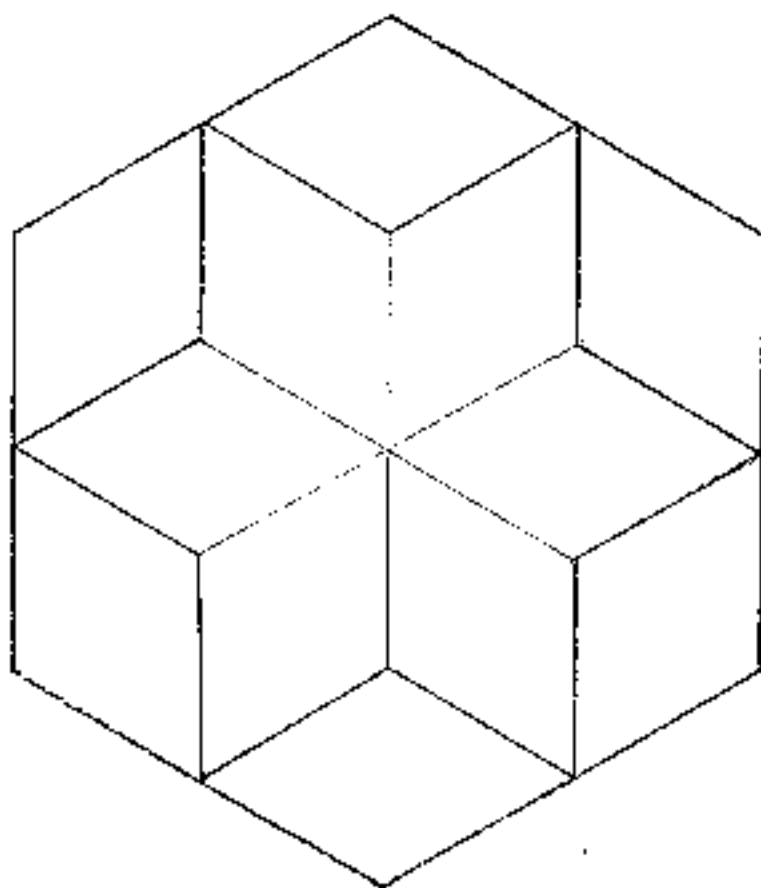


J. HESTER

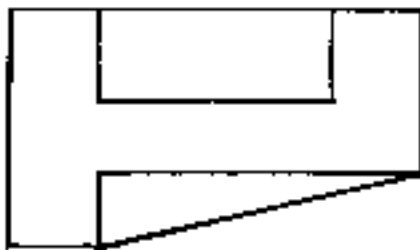
FALL '18

D2-BRICKS

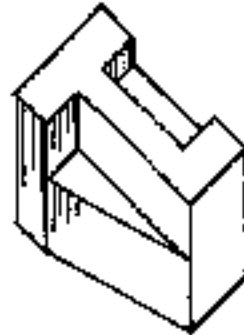


J. HESTER
FALL 18

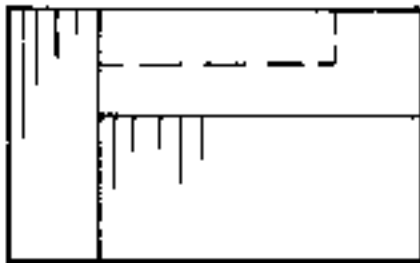
D3 - HEXACON



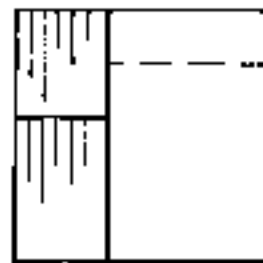
TOP VIEW



ISO. VIEW



FRONT VIEW



RT SIDE VIEW

J. HESTER
FALL 18

DI - 7 ORTHO.
EXERCISE 2

FOR MAIN TITLES
USE 1/4" HIGH
LETTERING AND
1/8" SPACING.

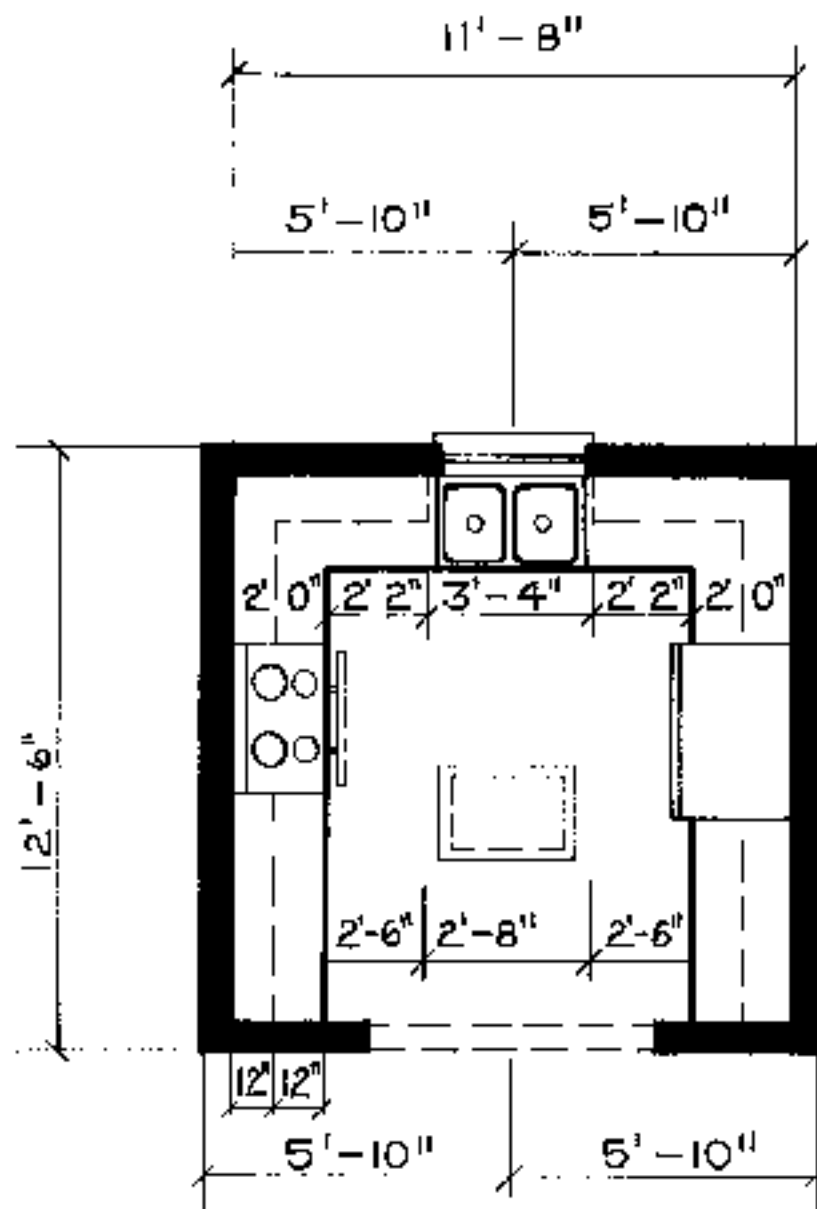
FOR SUB-TITLES
USE 3/16" HIGH
LETTERING AND 3/32"
SPACING.

FOR MOST NOTES AND OTHER
TEXT USE 1/8" HIGH LETTERING
AND 1/16" SPACING. (MINIMUM FOR
DOCUMENT REDUCTIONS).

IN SOME INSTANCES THE USE OF 3/32"
HIGH LETTERING FOR NOTES IS ACCEPTABLE
IN THIS CASE THE SPACING SHOULD BE
EITHER 3/32" OR 3/16"

J. HESTER
FALL '8

1-2



SCALE 1/4" = 1'-0"

J. HESTER
ID 1683 - F2018

D2-1: KITCHEN PLAN
OCT. 25, 2018

DESIGN IS A PROCESS
THE HABIT OF CALLING A FINISHED PRODUCT A DESIGN
IS CONVENIENT BUT WRONG. DESIGN IS WHAT
YOU DO, NOT WHAT YOU'VE DONE.
-BRUCE ARCHER, THE GUARDIAN

J. MESTER
ID 1683 - F2018

12-4
OCT. 25, 2018